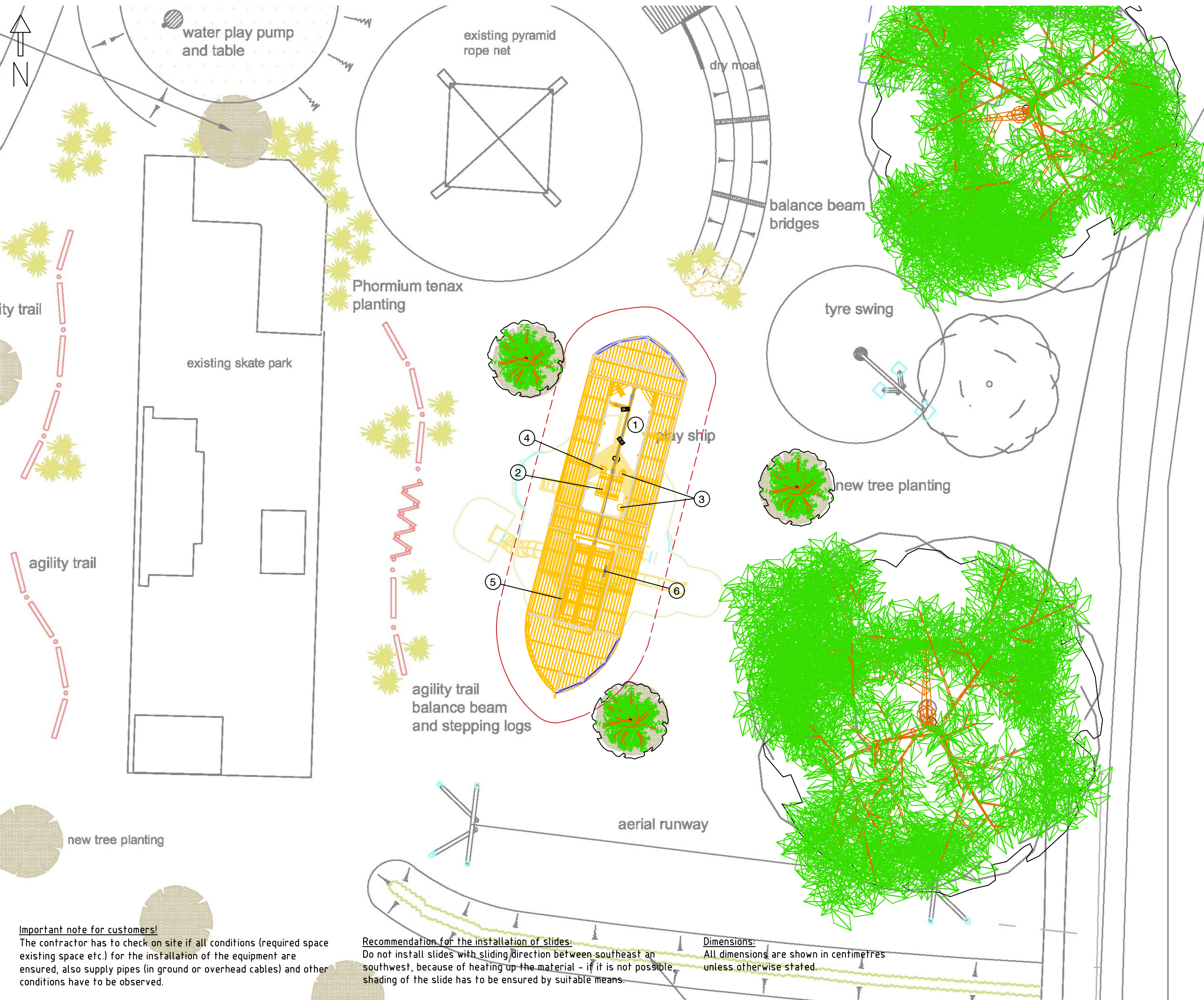


● Ground plan, scale 1:200

--- Falling space according to EN standard

Timberplay Ltd · Aizlewoods Mill · Nursery Street · Sheffield S3 8GG · T 0114 282 3474 · www.timberplay.com



**Legend:**

**Play Equipment**

- ① 1.11000 River Barge with Sand Transport System
- ② 4.40000 Table, diameter 1.40m height 0.75m
- ③ 4.40050 Stool With Back, x2
- ④ 4.24200 Trunk Seat
- ⑤ 9.06710 Sound Wall
- ⑥ 9.06710 Kling Klang

Rev	Description	Date
A	Play Area Design	29-08-19

Do not scale from this drawing



Project  
Ilminster Recreational  
Ground Play Area  
Play Area Proposal

Drawing Title  
Conceptual  
General Arrangement Plan

Scale	Date	Drawn
1:200@A3	29-08-19	NK
Quotation Number		Checked
		MR

**COPYRIGHT:**  
All rights to the design and equipment lie with Timberplay Ltd. and Richter Spielgeräte GmbH. This drawing is the property of Timberplay Ltd. Copyright is reserved by them and the drawing is issued on the condition that it is not copied, reproduced, retained nor disclosed to any unauthorized person either wholly or in part without the consent of Timberplay.

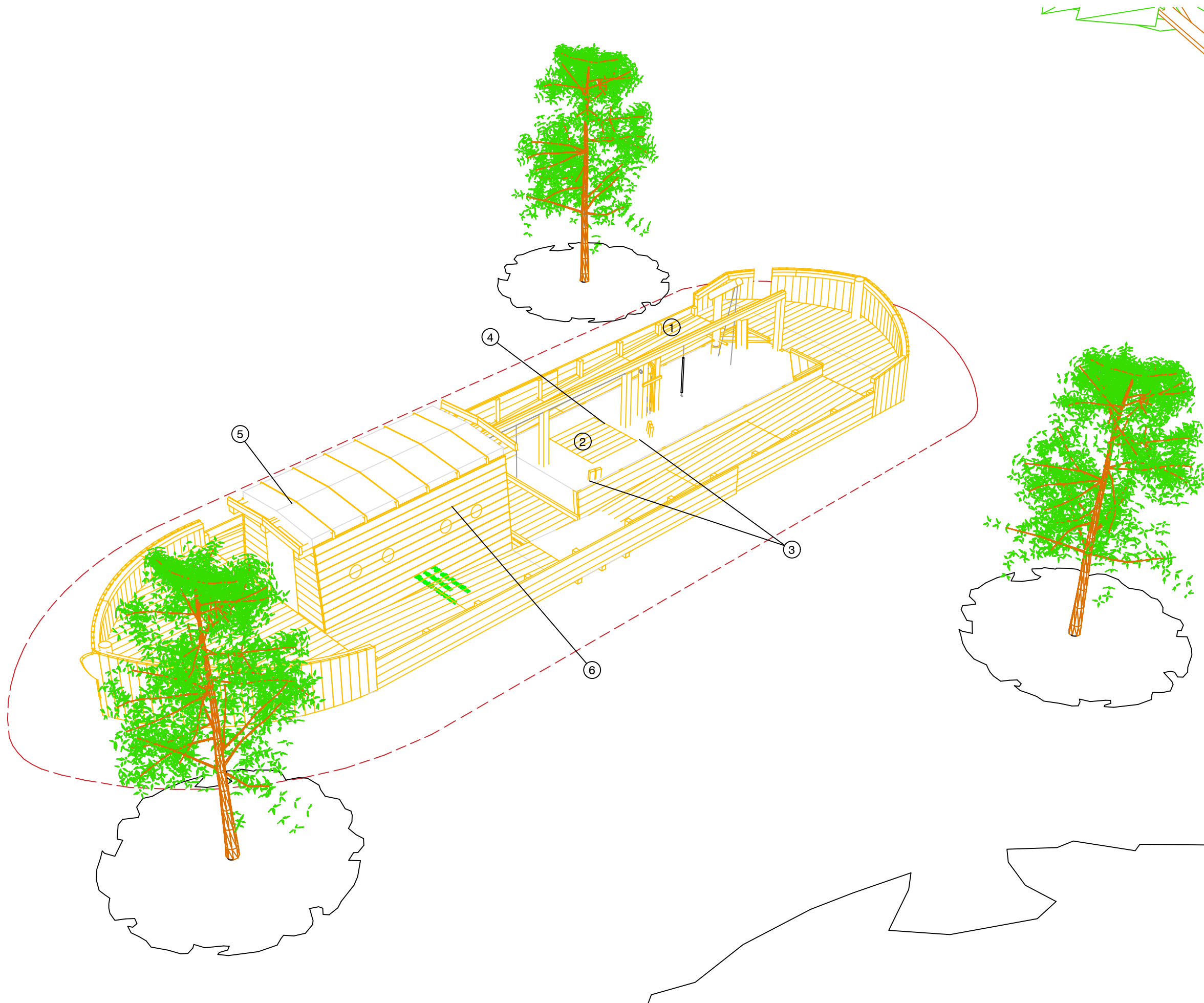
**Important note for customers!**  
The contractor has to check on site if all conditions (required space existing space etc.) for the installation of the equipment are ensured, also supply pipes (in ground or overhead cables) and other conditions have to be observed.

**Recommendation for the installation of slides:**  
Do not install slides with sliding direction between southeast and southwest, because of heating up the material - if it is not possible, shading of the slide has to be ensured by suitable means.

**Dimensions:**  
All dimensions are shown in centimetres unless otherwise stated.

● Perspective view, nts

- - - Falling space according to EN standard



**Legend:**

- Play Equipment**
- ① 1.11000 River Barge with Sand Transport System
  - ② 4.40000 Table, diameter 1.40m height 0.75m
  - ③ 4.40050 Stool With Back, x2
  - ④ 4.24200 Trunk Seat
  - ⑤ 9.06710 Sound Wall
  - ⑥ 9.06710 Kling Klang

Rev	Description	Date
A	Play Area Design	29-07-19

Do not scale from this drawing



Project  
Ilminster Recreational  
Ground Play Area  
Play Area Proposal

Drawing Title  
Conceptual  
General Arrangement 3D

Scale	Date	Drawn
nts@A3	29-07-19	NK
Quotation Number	Checked	
	MR	

**COPYRIGHT:**  
All rights to the design and equipment lie with Timberplay Ltd. and Richter Spielgeräte GmbH. This drawing is the property of Timberplay Ltd. Copyright is reserved by them and the drawing is issued on the condition that it is not copied, reproduced, retained nor disclosed to any unauthorized person either wholly or in part without the consent of Timberplay.

**Important note for customers!**

The contractor has to check on site if all conditions (required space existing space etc.) for the installation of the equipment are ensured, also supply pipes (in ground or overhead cables) and other conditions have to be observed.

**Recommendation for the installation of slides:**

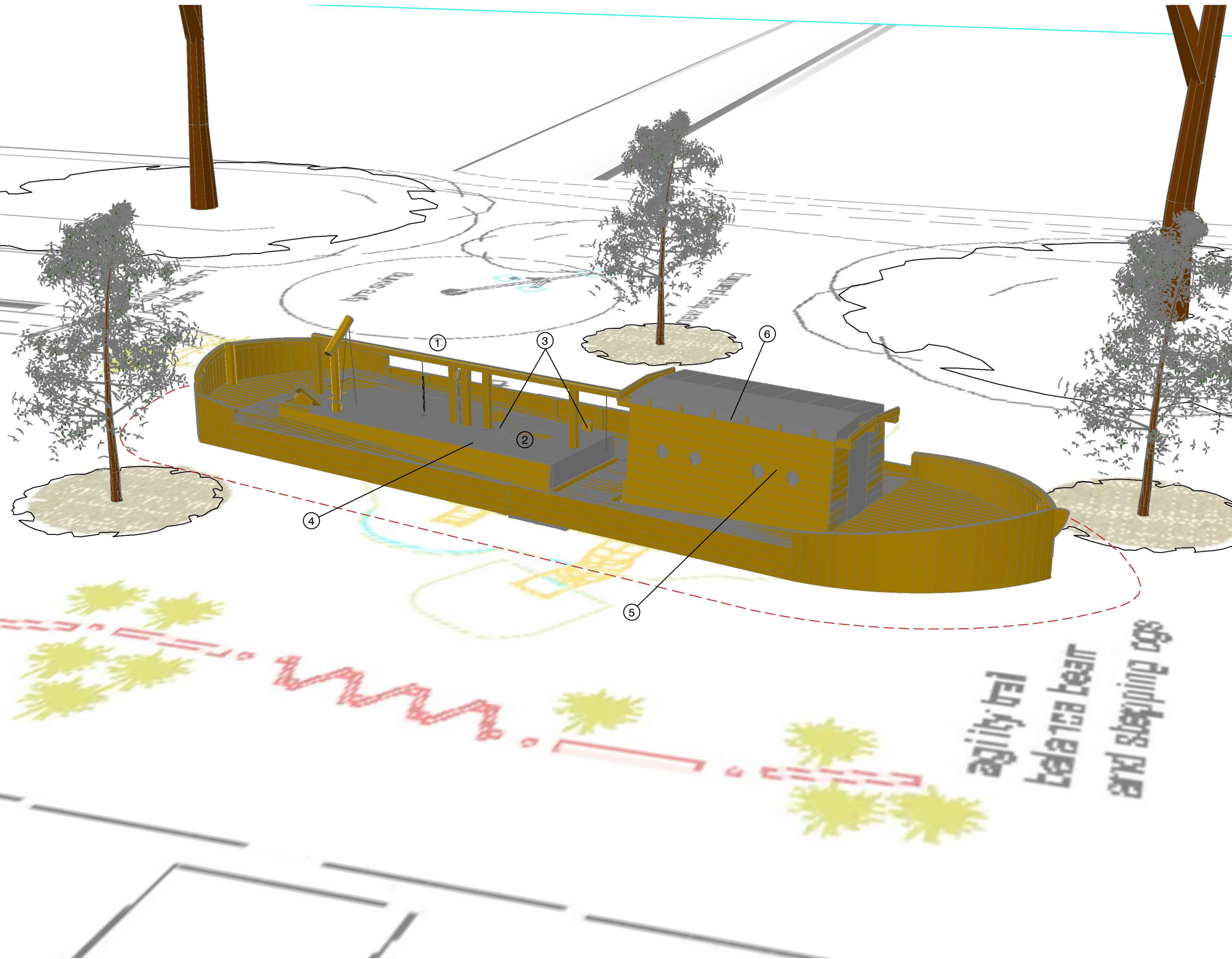
Do not install slides with sliding direction between southeast and southwest, because of heating up the material - if it is not possible, shading of the slide has to be ensured by suitable means.

**Dimensions:**

All dimensions are shown in centimetres unless otherwise stated.

● Perspective view, nts

- - - Falling space according to EN standard



**Legend:**

**Play Equipment**

- ① 1.11000 River Barge with Sand Transport System
- ② 4.40000 Table, diameter 1.40m height 0.75m
- ③ 4.40050 Stool With Back, x2
- ④ 4.24200 Trunk Seat
- ⑤ 9.06710 Sound Wall
- ⑥ 9.06710 Kling Klang

Rev	Description	Date
A	Play Area Design	29-07-19

Do not scale from this drawing



Project  
Ilminster Recreational  
Ground Play Area  
Play Area Proposal

Drawing Title  
Conceptual  
General Arrangement 3D

Scale	Date	Drawn
nts@A3	29-07-19	NK
Quotation Number		Checked
		MR

**COPYRIGHT:**

All rights to the design and equipment lie with Timberplay Ltd. and Richter Spielgeräte GmbH. This drawing is the property of Timberplay Ltd. Copyright is reserved by them and the drawing is issued on the condition that it is not copied, reproduced, retained nor disclosed to any unauthorized person either wholly or in part without the consent of Timberplay.

**Important note for customers!**

The contractor has to check on site if all conditions (required space existing space etc.) for the installation of the equipment are ensured, also supply pipes (in ground or overhead cables) and other conditions have to be observed.

**Recommendation for the installation of slides:**

Do not install slides with sliding direction between southeast and southwest, because of heating up the material - if it is not possible, shading of the slide has to be ensured by suitable means.

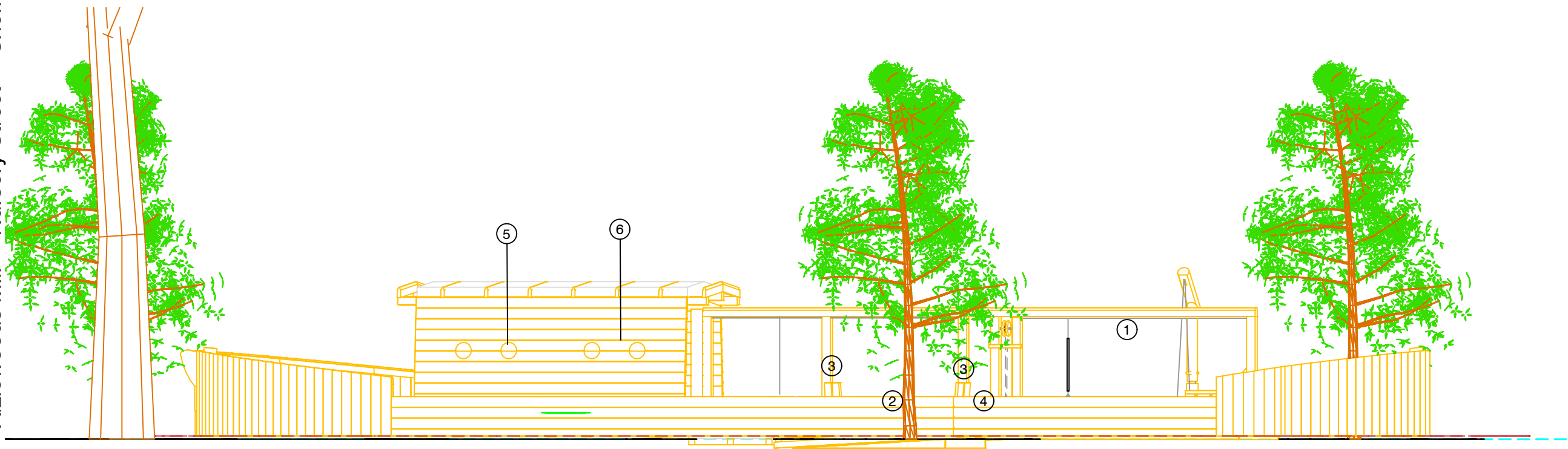
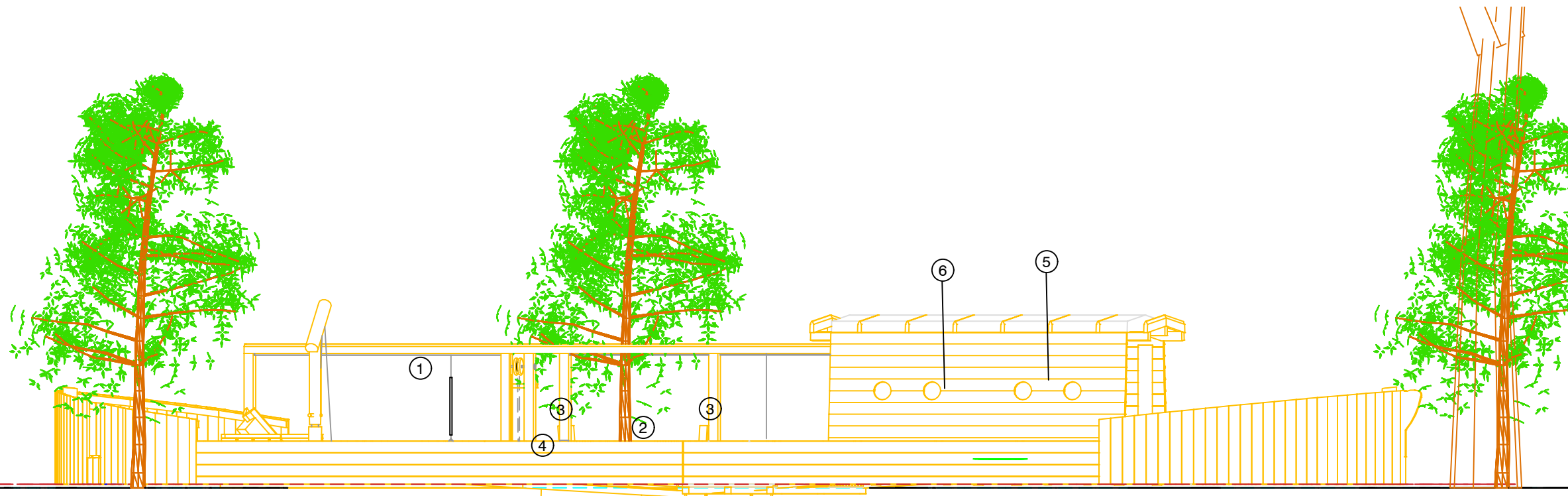
**Dimensions:**

All dimensions are shown in centimetres unless otherwise stated.

leg.kl.kl.kl  
bela rca bear  
and sleeping cog

● Elevation, nts

- / - Falling space according to EN standard



**Legend:**

**Play Equipment**

- ① 1.11000 River Barge with Sand Transport System
- ② 4.40000 Table, diameter 1.40m height 0.75m
- ③ 4.40050 Stool With Back, x2
- ④ 4.24200 Trunk Seat
- ⑤ 9.06710 Sound Wall
- ⑥ 9.06710 Kling Klang

A	Play Area Design	29-07-19
Rev	Description	Date

Do not scale from this drawing



Project  
**Ilminster Recreational Ground Play Area  
 Play Area Proposal**

Drawing Title  
**Conceptual  
 General Arrangement 3D**

Scale	Date	Drawn
nts@A3	29-07-19	NK
Quotation Number		Checked
		MR

**COPYRIGHT:**  
 All rights to the design and equipment lie with Timberplay Ltd. and Richter Spielgeräte GmbH. This drawing is the property of Timberplay Ltd. Copyright is reserved by them and the drawing is issued on the condition that it is not copied, reproduced, retained nor disclosed to any unauthorized person either wholly or in part without the consent of Timberplay.

**Important note for customers!**

The contractor has to check on site if all conditions (required space existing space etc.) for the installation of the equipment are ensured, also supply pipes (in ground or overhead cables) and other conditions have to be observed.

**Recommendation for the installation of slides:**

Do not install slides with sliding direction between southeast and southwest, because of heating up the material - if it is not possible, shading of the slide has to be ensured by suitable means.

**Dimensions:**

All dimensions are shown in centimetres unless otherwise stated.



# Iminster Recreational Ground



Sandplay



Sandplay



Exemplary Barge



Sandplay



Sandplay- mixing table



# Ilminster Recreational Ground



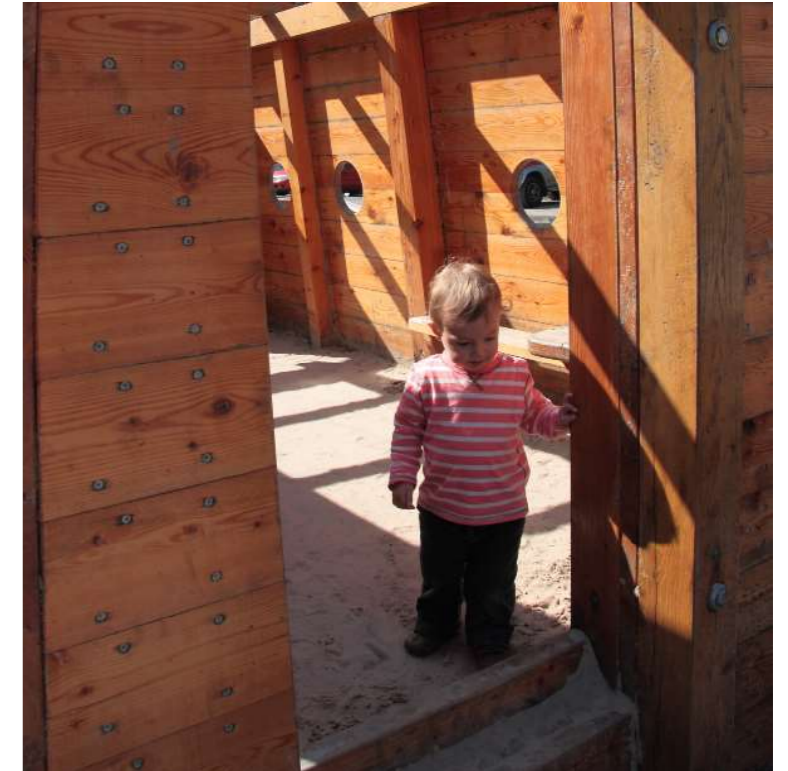
Sand hoists with shovels



Crane



Inside of the Barge



Inside of the Barge



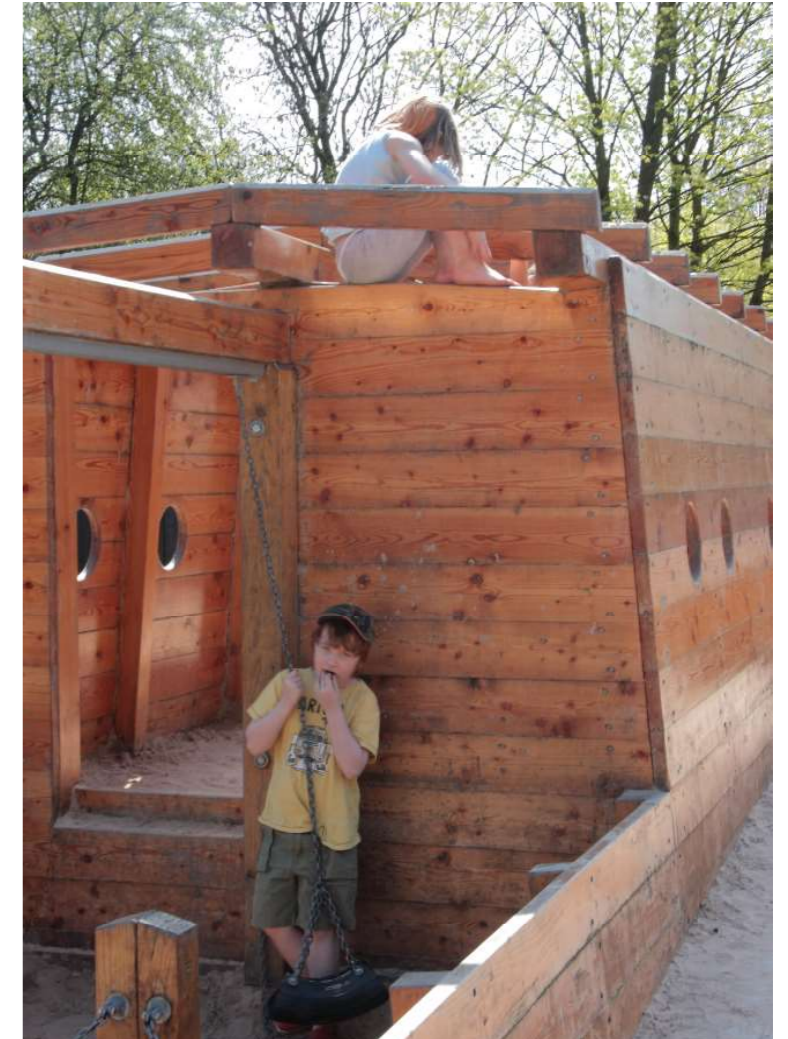
Round Windows



Bench



Crane



Sand Play