

**Committee: Open Spaces**

**Date: 1<sup>st</sup> August 2023**

**Title: Countryside Managers Report**

**Purpose of Report**

To inform Members of the activities that have been undertaken by the Open Spaces team since the last report.

**Recommendation:**

Members to note the report.

**Report:**

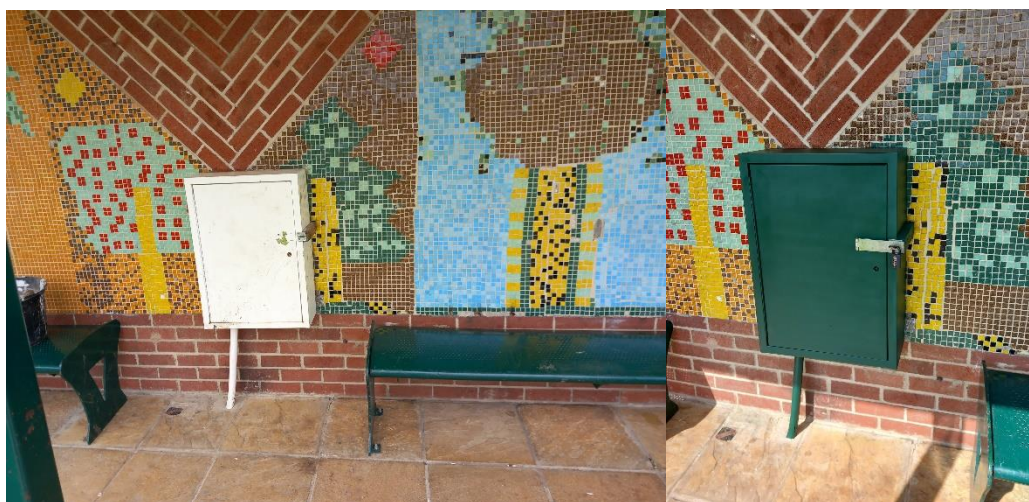
**1. The Recreation Ground**

The recreation ground is looking great. Works have been carried out to spruce up the toilet block, where possible, by giving the electric box and the door to the service area, which wasn't replaced, a facelift

The bases of benches have also been tidied up and re-edged, the Queen's jubilee bench has gone in and is looking fantastic. It is proving to be a very popular spot.

The top end of the canal has been given somewhat of a crown lift to open it up and expose the wall. The wall is an interesting feature and will complement the works that Jason is working on with RUG on the canal.

As the bird nesting season somewhat coming to an end, we will do a thorough check of the hedge along canal way as sometimes breeding can go on into September. If no nesting birds are present, we will side up the hedge along Canal Way.



## 2. Herne Hill

All the Herne Hill paths have been trimmed and being kept trimmed regularly. Using the logs from the willow at the cemetery we have made four benches that have been installed where historical benches have been removed.

We have a further five to go in the next few weeks, this is something Herne Hill Users group were keen to see happen.

What has been left over from the willow will be used to help improve known areas of path that pose real issues in the winter months. Work has started in these areas and will continue over the next few months.



## 3. Church

The Church grass is now down to the correct height and starting to look as it should. In August we will be looking to edge the paths and start the preparation for work later happening in September. We will prepare the surface for winter which will stop the moss growing and making it really slippery.

We have recently refurbished two of the benches in the churchyard and they are now looking super smart.

All in all, we have been having some great feedback about the church which is positive.

#### **4.Cemetery**

Like the church we have managed to get the grass down to the height in accordance with the specified height of the management plan, its starting to really take shape and hasn't been cut to this height in some time.

Old graves which had disappeared under the grass are starting to reappear again and the health of the grounds will only continue to improve.

We have recently carried out some pollarding on the large willow in the middle section, which was getting out of control. We have used the logs from the tree to create some benches for Herne Hill.

Raising the bottom trees has opened the area up and in the winter months further work will be carried out to open the views from the bottom of the cemetery further.

We have cut back the shrubs and bushes to keep them to a manageable size and will carry out regular trims over the next few months to get them into a controllable shape and size.

Like the churchyard we will be edging up the paths and continue the grass cutting regime over the next month or so.



**Jake Taylor  
Countryside Manager  
July 2023**

Action	Assigned to	Priority	Status	Start date	End date	Notes
1. Clean out guttering and replace broken bits						
Repair and reattach guttering around toilet block		Medium				
2. Seek permission to install blue town direction signs						
Create parish online map with locations	JT	Medium				
Find a list of pole owners		Medium				
Seek permission for installation		Medium				
Install signs		Medium				
3. Cost up repairs to steps by morgue and toilet						
Carry out repairs steps morgue						
4. Grass seed patches where required cemetery						
Fill in any areas where it is required		medium				
5. West Crescent Wildflower Meadow						
Cut meadow to 7.5cm	JT	High	Complete	02/06/23	02/06/23	
Rake up and dispose of arisings	JT	High	Complete	08/06/23	08/06/23	
6. Cemetery trees and shrubs						
Pollard willow in middle section of cemetery	Tree Surgeon		Complete	3/07/23	3/07/23	
Install new notice board			Complete	27/06/23	27/06/23	
Lift trees along bottom			Complete	3/07/23	03/07/23	
Bruch cut along bottom fence line						
Remove stones on from the grass			Complete	9/06/23	9/06/23	
Re-edge paths cemetery						
7. Recreation ground maintenance jobs						
Order paint	JT					
Replace fence posts						
Paint fence line	Volunteers					

Paint/door to service area	JF		Complete	30/05/23	30/05/23	
Repair skate ramp	JF			29/06/23		
Level and seed man hole	JF		Complete	02/06/23	02/06/23	
Cut hedge line in park			Complete	02/06/23	02/06/23	
Paint electric box			Complete	07/06/23	07/06/23	
Re-edge and expose benches base	JF		Complete	02/06/23	14/06/23	
8. Recreation ground/ brittens fieald ect reduce grass Cutting						
Week 23	JF		Complete	5/06/23	08/06/23	
Week 24	JF		Complete	12/06/23	14/06/23	
Week 25						
Week 26			Complete	26/06/23	26/06/23	
Week 27			Complete	03/07/23	03/07/23	
Week 28			Complete	10/07/23	10/07/23	
Week 29			Complete	18/07/23	18/07/23	
Wek 30			Complete	25/07/23	25/07/23	
Week 31						
9. Cut the grass Cemetry						
Week 23 – Cut beetween 25- 40mm	JT		Complete	06/06/23	06/06/23	
Week 24 Cut beetween 25- 40mm	JT/NB		Complete	13/06/23	13/06/23	
Week 25 Cut beetween 25- 40mm			Not Done			
Week 26 Cut beetween 25- 40mm	JT		Complete	26/06/23	26/06/23	
Week 27 Cut beetween 25- 40mm	JT/NB		Complete	03/07/23	03/07/23	
Week 28 Cut beetween 25- 40mm	JT/NB		Complete	10/07/23	10/07/23	
Week 29 Cut beetween 25- 40mm			Complete	18/07/23	18/07/23	
Week 30 Cut beetween 25- 40mm			Complete	25/07/23	25/07/23	
Week 31 cut beetween 25- 40mm						
10. Cut Winterhay						
Week 23 – Cut beetween 25- 40mm	JT		Complete	06/06/23	06/06/23	
Week 24 Cut beetween 25- 40mm	JT/NB		Complete	13/06/23	13/06/23	
Week 25 Cut beetween 25- 40mm						

Week 26 Cut beetwen 25- 40mm			Complete	27/06/23	27/06/23	
Week 27 Cut beetwen 25- 40mm			Complete	04/07/23	04/07/23	
Week 28 Cut beetwen 25- 40mm	JT/NB		Complete	11/07/23	11/07/23	
Week 29 Cut beetwen 25- 40mm	JF		Complete	19/07/23	19/07/23	
Week 30 Cut beetwen 25- 40mm			Complete	26/07/23	26/07/23	
Week 31 cut beetwen 25- 40mm						
11. Cut Church						
Week 23 – Cut beetwen 25- 40mm	JT/NB		Complete	05/06/23	05/06/23	
Week 24 Cut beetwen 25- 40mm	NB		Complete	12/06/23	13/06/23	
Week 25 Cut beetwen 25- 40mm	JT		Not done			
Week 26 Cut beetwen 25- 40mm	JT/NB		Complete	27/06/23	27/06/23	
Week 27 Cut beetwen 25- 40mm			Complete	04/07/23	04/07/23	
Week 28 Cut beetwen 25- 40mm	JT/NB		Complete	11/07/23	11/07/23	
Week 29 Cut beetwen 25- 40mm	JT/NB		Complete	19/07/23	19/07/23	
Week 30 Cut beetwen 25- 40mm			Complete	26/07/23	26/07/23	
Week 31 cut beetwen 25- 40mm						
12. Cut paths herne hill						
Week 23	JT		Complete	06/06/23	14/06/23	
Week 24			Complete	13/06/23	14/06/23	
Week 25			Not Done			
Week 26			Complete	28/06/23	28/06/23	
Week 27			Complete	04/07/23	04/07/23	
Week 28			Complete	12/07/23	12/07/23	
Week 29			Complete	20/07/23	20/07/23	
Week 30			Complete	27/07/23	27/07/23	
Week 31						
13. Tennis courts works						
Make gravel edge	Volunteers	High		28/04/23		
Add hinge to gate						
14. Tidy up benches						

Renovate bench 1 from minster	NB		Complete	15/06/23		
Put bench 1 from minster back out	NB		Complete	15/06/23		
Remove bench 2 from minster			Complete	15/06/24	24/07/23	
Renovate bench 2 from minster			Complete	15/06/23	24/07/23	
Replace bench 2 from minster			Complete	24/07/23	25/07/23	
Install new bench for jubille			Complete	28/06/23	28/06/23	
15. Town flowers						
Plant minster bed and boarders	JT		Complete	13/06/23	13/06/23	
Put up hanging baskets	JT/NB		Complete	13/06/23	13/06/23	
Plant town entrance signs	NB		Complete	13/06/23	13/06/23	
Put out troughs			Complete	21/06/23	21/06/23	
Water flowers Week 23 Friday			Complete	23/06/23	23/06/23	
Water flowers Week 24 Monday			Complete	26/06/23	26/06/23	
Water Flowers week 24 Wednesday			Complete	28/06/23	28/06/23	
Water flowers Week 24 Friday			Not done			
Water flowers Week 25 Monday			Complete	23/06/23	23/06/23	
Water Flowers week 25 Wednesday			Complete	26/06/23	26/06/23	
Water flowers Week 25 Friday			Complete	28/06/23	28/06/23	
Water flowers Week 26 Monday			Complete	30/06/23	30/06/23	
Water Flowers week 26 Wednesday			Complete	03/07/23	03/07/23	
Water flowers Week 26 Friday			Complete	28/06/23	28/06/23	
Water flowers Week 27 Monday			Complete	01/07/23	01/07/23	
Water Flowers week 27 Wednesday			Complete	03/07/23	03/07/23	
Water flowers Week 27 Friday			Complete	05/07/23	05/07/23	
Water flowers Week 28 Monday			Complete	08/07/23	08/07/23	
Water Flowers week 28 Wednesday			Complete	10/07/23	10/07/23	
Water flowers Week 28 Friday			Complete	12/07/23	12/07/23	
Water flowers Week 29 Monday			Complete	15/07/23	15/07/23	
Water Flowers week 29 Wednesday			Complete	17/07/23	17/07/23	
Water flowers Week 29 Friday			Complete	19/07/23	19/07/23	

Water flowers Week 30 Monday			Complete	24/07/23	24/07/23	
Water Flowers week 30 Wednesday			Complete			
Water flowers Week 30 Friday						
Water flowers Week 31 Monday						
Water Flowers week 31 Wednesday						
Water flowers Week 31 Friday						
16. Empty bins						
Empty bins week 23 – Monday	NB		Complete	12/06/23	12/06/23	
Empty Bins week 23 – Friday						
Empty bins week 24 – Monday			Complete	12/06/23	12/06/23	
Empty Bins week 24 – Friday			Complete	17/06/23	17/06/23	
Empty bins week 25 – Monday			Complete	19/06/23	19/06/23	
Empty Bins week 25 – Friday			Complete	24/06/23	24/06/23	
Empty bins week 26 – Monday			Complete	26/06/23	26/06/23	
Empty Bins week 26 – Friday			Complete	31/06/23	31/06/23	
Empty bins week 27 – Monday			Complete	03/07/23	03/07/23	
Empty Bins week 27 – Friday			Complete	08/07/23	08/07/23	
Empty bins week 28 – Monday			Complete	10/07/23	10/07/23	
Empty Bins week 28 – Friday			Complete	15/07/23	15/07/23	
Empty bins week 29 – Monday			Complete	17/07/23	17/07/23	
Empty Bins week 29 – Friday						
Empty bins week 30 – Monday						
Empty Bins week 30 – Friday						
Empty bins week 31 – Monday						
Empty Bins week 31 – Friday						
17. Misc						
Clean up tree down Herne hill	JT					
Full site Risk Inspection (April)	JT					
Tree Inspection Herne hill picnic area (MAY)	JT		Complete	30/06/23	30/06/23	



Tree inspection west crescent play park (MAY)	JT		Complete	30/06/23	30/06/23	
Tree inspection winterhay play park (MAY)	JT		Complete	30/06/23	30/06/23	
Tree inspection Wharf lane play park (MAY)	JT		Complete	30/06/23	30/06/23	
Clear ditch along the incline			Complete	27/04/23	27/04/23	
Spare key for ferris to the office						
Fix notice locks by market						
Drill and replace notice board locks on board inside the market house						
Remove dumped mattress by hammerhead	JT/NB		Complete	14/06/23	14/06/23	
Crown lift tree incline	NB/JF		Complete	20/04/23	20/04/23	
Put in memorial bench herne Hill			Complete	28/06/23	28/06/23	
Trim tree canal			Complete	17/06/23	17/06/23	