

APPENDIX 9A

A welcoming place
<ul style="list-style-type: none">• Ensure that Herne Hill Local Nature Reserve is welcoming and accessible
Healthy, Safe and Secure
<ul style="list-style-type: none">• Work towards keeping risk as low as reasonably possible for all users of the conservation site
Clean and well maintained
<ul style="list-style-type: none">• To maintain good standards of cleanliness and site maintenance
Sustainability
<ul style="list-style-type: none">• Adopt environmental management principles to reduce the impact of management operations on the environment
Conservation
<ul style="list-style-type: none">• Maintain the wildflower meadow and ancient woodland in favorable condition.
<ul style="list-style-type: none">• To maintain and extend populations of locally rare or notable flora and fauna
<ul style="list-style-type: none">• To maintain and enhance the biodiversity of the site, making the most of all opportunities that will benefit wildlife
Heritage
<ul style="list-style-type: none">• Maintain and or enhance the sites history and archaeology
Community Involvement
<ul style="list-style-type: none">• To recognize and encourage further community involvement in the conservation site through consultation, events, and activities.
Marketing
<ul style="list-style-type: none">• To actively promote the LNR to all potential users
Management
<ul style="list-style-type: none">• To provide a responsive, flexible and high-quality management service.

	Project	Priority	Partner	Year/Month	Cost	Done
A Welcoming Place						
Ensure that Herne Hill Local Nature Reserve is welcoming and accessible						
1.1	Maintain signage and other entrance infrastructure					
1.1.1	Ensure entrance signs and clean, presentable and in good condition	H		Monthly	40	
1.1.2	Clean/repair/Repaint entrance gates	H		Y1-5, M6	30	
1.1.3	Review entrance signage	H		Y1, M8		
1.1.4	Purchase Signage and install (as per Review)	H		Y1, M4		
1.2	Maintain Pathways and access to an acceptable standard					
1.2.1	Cut paths to a width of 2m	H		Y1-5 M4-9		
1.2.2	Keep 2 m width either side of pathways clear from scrub and saplings	H		Y1-5		
1.2.3	Routes that become difficult in winter should be signed and alternative routes signed posted			Y1-5 M10-2		
1.2.4	Areas which are known to be problematic in winter should be improved where possible	H	Volunteers	Y1-2		
1.2.5	Tree safety inspections to be carried out after high winds and independently annually on all main access routes	H	SSDC	Y1-5		
1.2.6	Steps gates and other access furniture to be checked annually	H		Y1-5, M4, M10		
1.2.7	Keep paths clear from overhanging	H				
1.2.8	Review waymarking of site	H		Y1, M9		
1.2.9	Implement findings from way marking review	H		Y2 M4		
Healthy Safe and secure						
Work towards keeping risks as low as reasonably possible						
2.1	Keep risk from of harm from trees to a minimum					
2.1.1	Outsource an independent tree safety survey of all main walking routes and picnic areas annually and action any identified risks	H		Y1-5		

2.1.2	Respond to any reports of trees being damaged or down promptly	H		Y1-5		
2.1.3	Ensure the ITC Tree Safety management plan is implemented	H		Y1-5		
2.2	Maintain infrastructure to an acceptable standard					
2.2.1	Carry Biannual safety checks of all infrastructure	H		Y1-5 M4, M10		
2.2.2	Carry out identified works	H		Y-1-5		
Clean and well maintained						
To maintain a good level of cleanliness and site maintenance						
3.1	Seek to reduce littering and dog fouling					
3.1.1	Continue to empty dog bins weekly (Summer x 2 Winter x 1)	H		Y1-5		
3.1.2	Litter pick site and known litter hot spots whilst emptying bins	H		Y1-5		
3.1.3	Use social media to highlight the negative impact of anti-social behavior and discourage fires and BBQs	H		Y1-5		
3.2	Maintain site infrastructure					
3.2.1	See section 1.1	H		Y1-5		
3.2.2	Strim and cut vegetation around infrastructure to keep them open and useable	H		Y1-5 M4-9		
3.2.3	Clean and treat infrastructure to prevent rot and rust	H		Y1-5		
Sustainability						
Adopt environmental management principles to reduce the impact of management operations on the environment						
4.1	Use local and recycled materials for new structures					
4.1.1	Investigate opportunities on a case-by-case basis	H		Y1-5		
4.2	Sustainable use of airings					

4.2.1	Where appropriate wood will be stacked as habitat piles	H		Y1-5		
4.2.2	Brush will be used in dead hedging or as base layer for surfacing where appropriate	H		Y1-5		
4.2.3	Where required other brush will be wood chipped to use to help maintain surfacing of pathways	H		Y1-5		
4.2.4	Where appropriate larger bits of wood will be used for benches of other infrastructure projects	H		Y1-5		
4.2.5	Coppiced wood that has not been used for the above will be sold to residents	H		Y1-5		
4.2.6	Other soft airings will be composted and used around site where possible	H		Y1-5		
4.3	Managing Environmental Impact					
4.3.1	Products containing peat will not be used			Y1-5		
4.3.2	STIHL BioPlus chain oil will be used as a more environmentally friendly alternative to traditional lubricants			Y1-5		
4.3.3	Work operations will be carried out at the appropriate time of year to avoid disturbance to wildlife			Y1-5		
4.3.4	Consideration will be given to least impactful management techniques to minimize disturbance			Y1-5		
<p>Conservation</p> <p>Continue to ensure that the woodlands vegetation continues to develop in the character of ancient woodland</p> <p>Continue to manage areas on rank grassland for the benefit of invertebrates</p> <p>Continue to develop and enhance the West Crescent wildflower meadow</p>						
5.1	Manage Cleaves Close as rank grassland					
5.1.1	Remove saplings and sucker growth from the area	H	Volunteers	Y1-5 M11-2		
5.1.2	Cut area in mosaic pattern as highlighted in Appendix A on a three-year rotation at a height of 30-50mm	H		Y1-5 M10		
5.1.3	Cut criss-cross paths area to 30-50mm every year	H		Y1-5 M10		
5.1.4	Cut incline as highlighted in appendix A on a three-year rotation at a height of 30 - 40mm	H		Y1-5 M10		

5.2	Maintenance of boundaries and hedgerows					
5.2.1	Remove bramble and bracken from boundaries to encourage new growth 2 meters in width where possible	H	Volunteers	Y1-5 M11-2		
5.2.2	Hedges should be cut on a three-year cycle as described and highlighted in Appendix B	H	Volunteers	Y1-5 M11-2		
5.2.3	Dead hedges should be topped up annually to 1m in height and 1 m in width to be utilized as corridors for wildlife	H	Volunteers	Y1-5 M11-2		
5.2.4	Hedges should be laid on a cycle as described in Appendix C	H	Volunteers	Y1-5 M11-2		
5.2.5	Undertake a hedgerow survey to identify condition and gaps in boundaries	H	Volunteers	Y1 M9		
5.2.6	Create a planting restoration regime with the findings from 5.2.5	H		Y1 M10		
5.3	Continue to maintain and enhance the Coppice band					
5.3.1	Continue to maintain the coppice band on a 14-year cycle as described	H	Volunteers	Y1-5 M11-2		
Heritage						
Maintain and or enhance the sites history and archaeology						
6.1	Identify notable history of the site					
6.1.1	Review what is known about the history of the nature reserve and land it was formed on and adjacent to					
6.2	Investigate links with local historical interest groups					
6.2.1	Liaise with Ilminster History Society	H	IHS			
6.3	Educate and inform visitors of historical significance of the site					

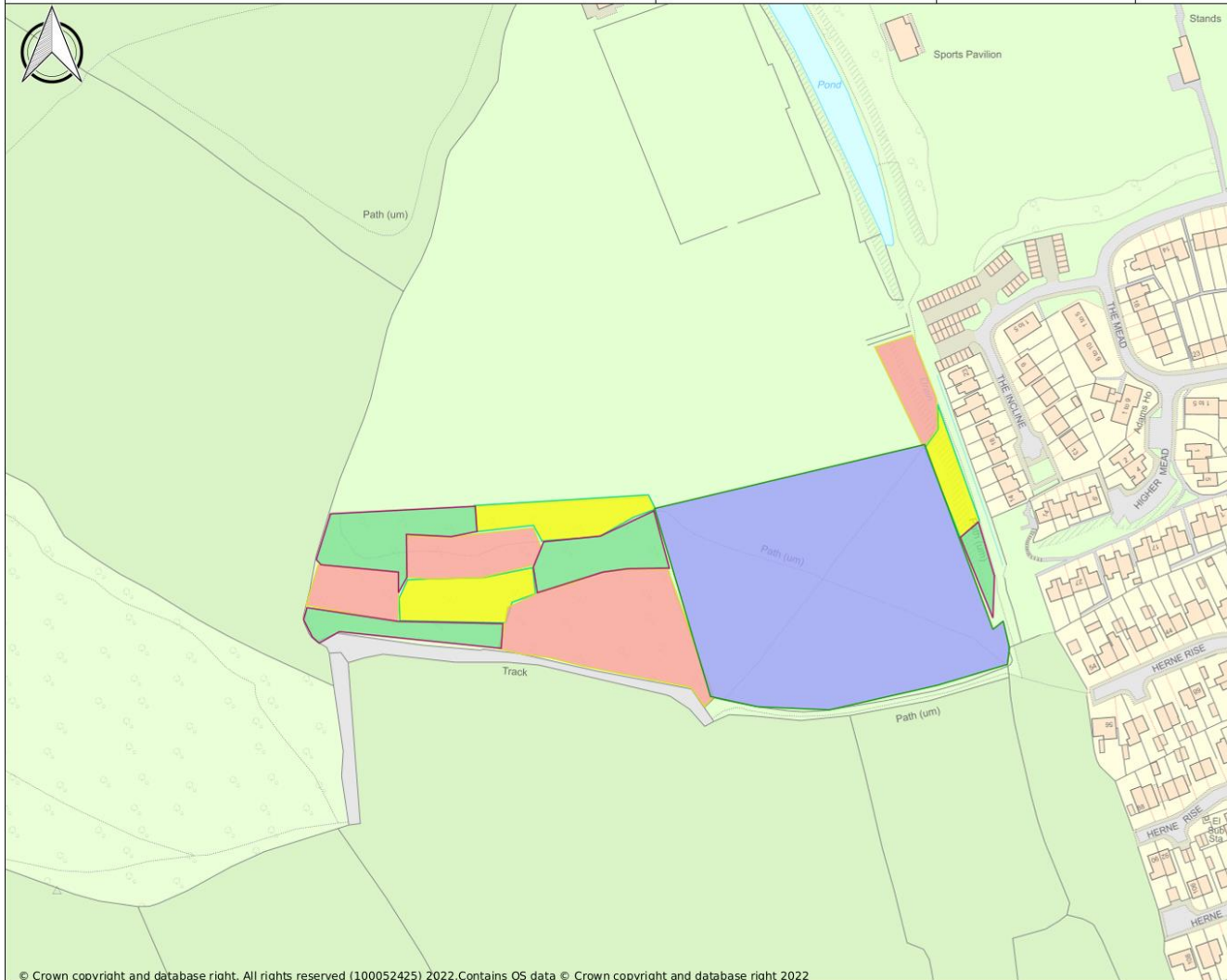
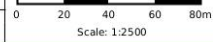
6.3.1	Using results from 6.1.1 explore on site interpretation to highlight these features where possible					
6.3.2	Consider heritage and historical features in interpretation plan					
Community involvement						
To recognize and encourage further community involvement in the conservation site through consultation, events and activities.						
7.1	Continue to work with Volunteer groups					
7.1.1	Continue to provide monthly volunteer tasks	H		Y1		
7.1.2	Explore providing more regular opportunities to volunteer	H		Y2		
7.1.3	Find an appropriate way of recognizing and thanking volunteers	H		Y1-5		
7.2	Consult and seek feedback from the community					
7.2.1	Consult with interest groups such as Green Ilminster on relevant projects	H				
7.2.2	Create a Herne Hill users' group to meet quarterly to receive feedback and discuss ideas					
7.2.3	Consult visitors about developments and major improvement projects	H				
7.3	Encourage participation in caring for the park					
7.3.1	Explore working with local groups as businesses for cooperative volunteering	H		Y2-5		
7.3.2	Explore providing work placements for schools	H		Y3-5		
7.3.3	Hold seasonal guided walks to help interpret our work	H		Y2-5 M4-9		
Marketing						
To actively promote the LNR to all potential users						
8.1	Provide visitors with relevant information					
8.1.1	Review quality of current leaflets					
8.1.2	Commission map of Herne Hill				150	

8.1.3	Re-design leaflet					
8.1.4	Explore potential of themed trails for adults					
8.2	Improve content on website					
8.2.1	Review what content is currently available online					
8.2.2	As result of the review put together key information to update website					
8.3	Continue to use Facebook					
8.3.1	Continue to use Facebook to update and inform people of activities that are occurring in the LNR					
8.3.2	Encourage users to share their photos online with the #myilminster					
8.3.3	Explore creating a photo moment somewhere in the woods					
Management						
To provide a responsive, flexible and high quality management service.						
9.1	Ensure Management plan is an effective working document					
9.1.1	Prepare an annual action plan reviewing previous ones					
9.1.2	Ensure the plan is available for consultation with community groups					
9.2	Ensure staff are well managed and receive training and development					
9.2.1	Hold monthly team meetings					
9.2.2	Carry out regular one to one appraisals with staff					
9.2.3	Identify and meet training needs, keep records					
9.2.4	Induction for new staff and volunteers					
9.3	Ensure the successful management of the LNR is recognized through the accreditation					

Ilminster

Author:

Date: 12/05/2022



Parish



Conservation Cutting



2



1



3



4